

A Distinct G₁ Step Required to Specify the Chinese Hamster DHFR Replication Origin

Jia-Rui Wu and David M. Gilbert*

A Distinct G₁ Step Required to Specify the Chinese Hamster DHFR Replication Origin

Jia-Rui Wu and David M. Gilbert*

Nuclei isolated from Chinese hamster ovary (CHO) cells at various times during the G₁ phase of the cell cycle were stimulated to enter S phase by incubation in *Xenopus* egg cytosol. Replication of DNA initiated within the dihydrofolate reductase (DHFR) origin locus in nuclei isolated late in G₁, but at random sites in nuclei isolated early in G₁. A discrete transition point occurred 3 to 4 hours after metaphase. Neither replication licensing nor nuclear assembly was sufficient for origin recognition. Thus, a distinct cell cycle-regulated event in the nucleus restricts the initiation of replication to specific sites downstream of the DHFR gene.

Mammalian origins of DNA replication have been difficult to identify. Although the initiation of replication in cultured fibroblasts is confined to specific, genetically determined chromosomal loci, the size of these loci and the frequency of initiation at particular sequences within these loci remain unclear (1-4). Furthermore, attempts to identify cis-acting control elements have underscored the apparently limitless number of DNA sequences that have the potential to function as origins (5). Extracts of *Xenopus* eggs induce initiation of replication specifically within the DHFR origin locus when intact nuclei (6) of CHO cells are introduced as a substrate; however, replication initiates at many more sites with damaged nuclei or bare DNA, demonstrating that origin recognition requires some component of nuclear structure (7). In these latter experiments, intact nuclei were isolated from CHO cells that were synchronized exclusively at 4 hours after metaphase (7). Given that the well-characterized origins of replication in *Saccharomyces cerevisiae* are occupied throughout the cell cycle by an essential multisubunit origin recognition complex (ORC) (8), it was important to determine whether recognition of mammalian replication origins also requires a constitutive element of nuclear structure.

We first examined whether nuclei isolated immediately after formation of the nuclear membrane are already committed to initiate replication at specific sites. CHOC 400 cells (9) were synchronized in metaphase by brief (4 hours) treatment with nocodazole followed by selective detachment of mitotic cells (7), and were then released into G₁ phase for 60 min—determined to be sufficient time to assemble an intact nuclear envelope in 95 to 100% of cells (Figs. 1 and 3B). Cells were then permeabilized with digitonin (7), and intact

nuclei ("1-hour nuclei") were introduced into a *Xenopus* egg extract. As a control, nuclei isolated 4 hours after metaphase ("4-hour nuclei") were also introduced into *Xenopus* egg extract. DNA synthesis in both 1-hour and 4-hour nuclei was sensitive to the protein kinase inhibitor 6-dimethylaminopurine (6-DMAP), which specifically blocks initiation of replication (7), and began after a similar lag period, indicating that the egg extract mediates assembly of initiation complexes in both types of nuclei at the same rate (Fig. 2A). Because 100% of both types of nuclei were engaged in DNA synthesis (Fig. 2B) at the same overall rate (Fig. 2A), we conclude that similar numbers of replication forks were activated in both 1-hour and 4-hour nuclei.

Initiation of replication at specific genomic loci in 1-hour and 4-hour nuclei was evaluated (Fig. 2, C and D) by the early labeled-fragment hybridization (ELFH) assay (7). Nuclei were incubated in *Xenopus* egg extract for 2 hours in the presence of aphidicolin, a specific inhibitor of replicative polymerases, to allow accumulation of newly formed replication forks arrested close to their sites of initiation (7). The nuclei were then washed free of aphidicolin, nascent DNA chains were labeled briefly with [α -³²P]deoxyadenosine 5'-triphosphate, and the resulting [³²P]DNA chains were tested for hybridization with 15 unique probes distributed over a 130-kb region that included the DHFR origin of bidirectional replication (OBR) (7). Most of the [³²P]DNA synthesized in 4-hour nuclei originated from within the initiation locus (Fig. 2C). In contrast, nascent DNA synthesized near the origins of 1-hour nuclei hybridized almost equally well to each of the probes. In fact, the pattern of early DNA synthesis in 1-hour nuclei was virtually identical to that obtained when replication intermediates were labeled in nuclei from exponentially growing CHOC 400 cells (which serve as a pool of replication forks distributed randomly throughout the DHFR locus) and then tested for hybridization with these same probes (Fig. 2C). To

reveal the initiation sites in this region more accurately, we normalized the relative hybridization of early replication intermediates to the 15 probes to that of exponentially growing cells (Fig. 2D). The bell-shaped curve apparent with 4-hour nuclei is consistent with previous origin mapping data at this locus, one possible interpretation for which is a primary region (or regions) of initiation activity localized to within several kilobases, surrounded by secondary sites that constitute a larger initiation zone (2, 4, 7, 10). In contrast, no pref-

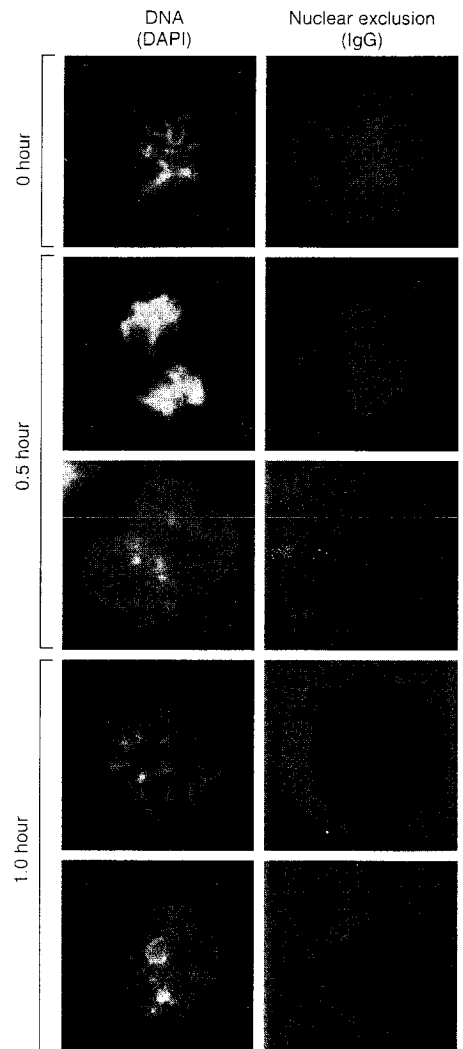


Fig. 1. Nuclear envelope assembly after mitotic synchrony. CHOC 400 cells were synchronized in metaphase as described (7) and then released into G₁ for the indicated times, permeabilized with digitonin (7), and incubated with 4,6-diamidino-2-phenylindole [DNA (DAPI)] and Texas red-labeled immunoglobulin G [nuclear exclusion (IgG)] (7-9). At 0.5 hour, a mixture of cells in anaphase (top 0.5-hour panel) and telophase (bottom 0.5-hour panel) is observed. By 1 hour, nuclear membranes have completely surrounded chromatin in 95 to 100% of cells, with some nuclei still containing partially condensed chromatin (top 1-hour panel). By 1.5 hours, all cells appear as in the bottom 1-hour panel. Magnification, $\times 1000$.

Department of Biochemistry and Molecular Biology, SUNY Health Science Center, 750 East Adams Street, Syracuse, NY 13210, USA.

*To whom correspondence should be addressed.

forks are labeled early in the replication reaction (7). To confirm that the difference between 1-hour and 4-hour nuclei was not the result of an artifact imposed by the use of nocodazole, we collected untreated mitotic cells and repeated the experiments shown in Fig. 2, with nearly identical results. Thus, we conclude that *Xenopus* egg extract induced initiation of replication at the same specific sites in 4-hour nuclei as

are apparent in cultured CHO 400 cells, but at sites distributed randomly throughout the DHFR locus in 1-hour nuclei. To determine the time during G_1 at which CHO 400 cells restrict initiation to specific regions of the DHFR locus, we prepared nuclei at various times during G_1 and mapped the sites of replication initiation in *Xenopus* egg extract (Fig. 3A). Specificity was not detected until 3 hours after meta-

replication intermediates from 1-hour and 4-hour nuclei, prepared as described in text. Labeled nascent DNA from exponentially proliferating CHO 400 cells was also tested for hybridization to the same probes. Probe names and map positions are as described (7). Relative counts per minute were obtained with a PhosphorImager (Molecular Dynamics); normalizing to the lowest experimental value; they were also divided by probe size to give relative counts per minute per base pair (cpm/bp). Probe λ is a segment of bacteriophage λ DNA included in each experiment to evaluate the extent of nonspecific hybridization. (□) Experimental variation between probes that was not specifically attributable to the synchrony of replication forks close to initiation sites [such as differences in hybridization efficiency or deoxyadenine content (7)] was corrected by dividing the relative DNA synthesis after pulse labeling, the differences between probes, not the area under the curve, should be compared. The horizontal axis shows the relative map positions of the probes and includes a diagram to orient the DHFR and 2BE2121 transcription units. The vertical line through the graph shows the position of the previously mapped OBR (2-4).

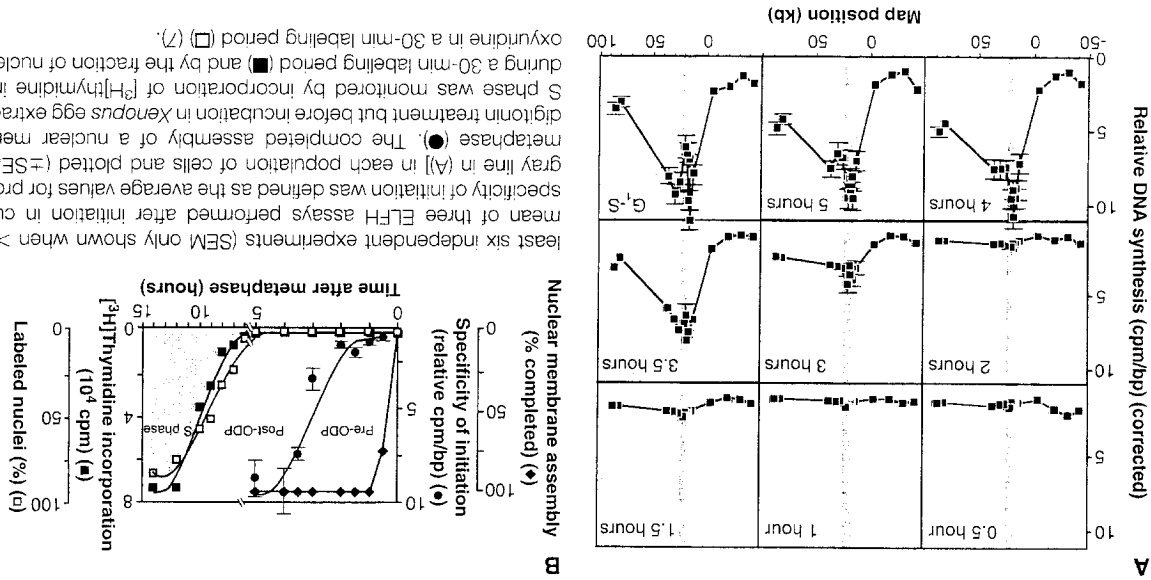


Fig. 3. Timing of the DHFR origin decision point (ODP) during G_1 phase. (A) Nuclear membrane assembly was monitored after metaphase in cultured cells. (B) The relative specificity of initiation was defined as the average values for probes B to E [highlighted by the gray line in (A)] in each population of cells and plotted (\pm SEM) as a function of time after metaphase in a 30-min labeling period (□) (7).

least six independent experiments (SEM only shown when >1). The G_1 -S plot shows the mean of three ELFH assays performed after initiation in cultured cells. (B) The relative specificity of initiation was defined as the average values for probes B to E [highlighted by the gray line in (A)] in each population of cells and plotted (\pm SEM) as a function of time after metaphase in a 30-min labeling period (□) (7). The completed assembly of a nuclear membrane was monitored after metaphase in treatment but before incubation in *Xenopus* egg extract as in Fig. 1 (◆). The onset of S phase was monitored by incorporation of [3 H]thymidine into acid-precipitable material during a 30-min labeling period (■) and by the fraction of nuclei that incorporated bromode-

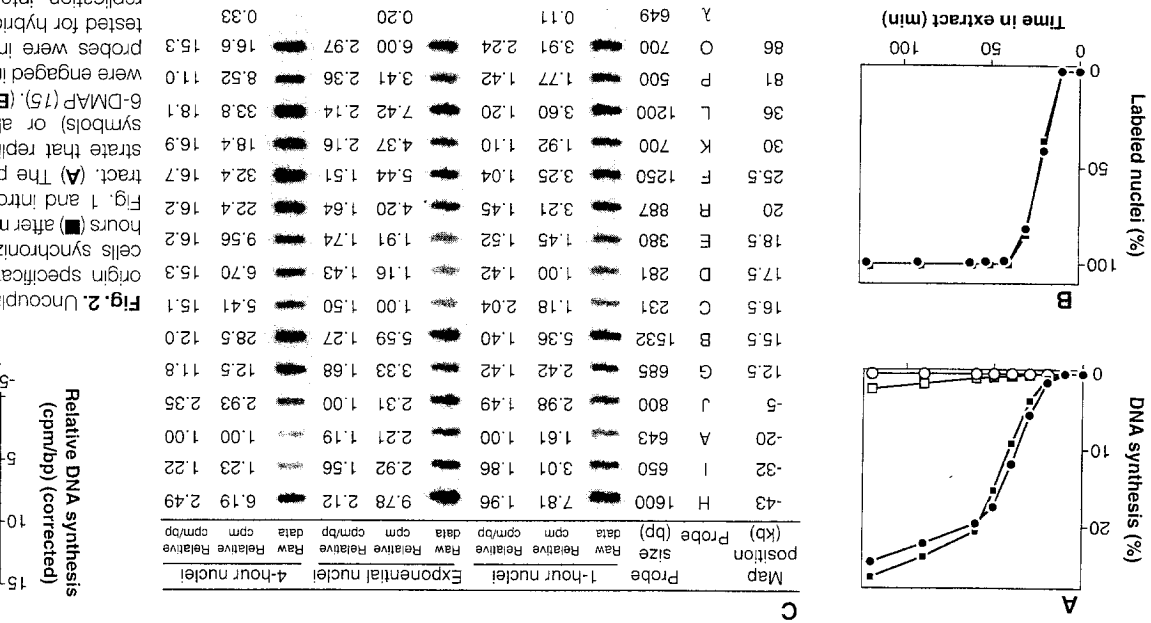


Fig. 2. Uncoupling of replication licensing from origin specification. Nuclei from CHO 400 cells synchronized at either 1 hour (●) or 4 hours (■) after metaphase were prepared as in Fig. 1 and introduced into *Xenopus* egg extract. (A) The percentage of total DNA substrate that replicated in the presence (open symbols) or absence (closed symbols) of 6-DMAF (15). (B) The percentage of nuclei that were engaged in DNA synthesis (15). (C) DNA probes were immobilized on slot blots and tested for hybridization with 32 P-labeled early replication intermediates from 1-hour and 4-hour nuclei, prepared as described in text.

phase and reached a maximum between 3.5 and 4 hours. Because the peak did not increase between 4 and 5 hours after metaphase, and because the height of the ELFH peak after initiation in cultured CHO 400 cells (G_1 -S) was not greater than those of the peaks at 4 and 5 hours, we conclude that the maximum attainable specificity was achieved by 4 hours after metaphase. The relative preference of *Xenopus* egg cytosol for initiation within the DHFR origin locus in nuclei prepared at different times after metaphase is plotted, together with nuclear membrane assembly and the onset of S phase, in Fig. 3B. The first cells entered S phase 7 hours after metaphase and 50% of the cells were engaged in DNA synthesis by 9 to 10 hours after metaphase, consistent with flow cytometric analysis that revealed an average G_1 phase of 10 to 11 hours. These data are also consistent with an increase in the percentage of cells that pass through a discrete regulatory point in G_1 between 3 and 4 hours after metaphase; we have termed this point the origin decision point (ODP) for the DHFR locus.

The data in Fig. 2 demonstrate that the DHFR locus ODP occurs 2 to 3 hours after replication licensing, the mechanism that converts eukaryotic nuclei from a postreplicative (G_2) to a prereplicative (G_1) state (8, 11). Intact mammalian nuclei that have not undergone the licensing step will not replicate in *Xenopus* egg extracts (11, 12). Pre-ODP nuclei have fully assembled nuclear envelopes (Fig. 1) and initiate replication at the same number of sites as post-ODP nuclei (Fig. 2, A and B). The DHFR locus ODP occurs close to the previously identified restriction point (R point), the time after which entry into S phase is independent of growth factors or moderate concentrations of protein synthesis inhibitors (13). Thus, it will be of interest to determine whether a similar ODP serves to establish origins of replication at other mammalian chromosomal loci and whether there is a mechanistic link between the commitment to cellular proliferation (R point) and the commitment to initiate replication at specific chromosomal loci (ODP).

REFERENCES AND NOTES

1. M. L. DePamphilis, *Annu. Rev. Biochem.* **62**, 29 (1993).
2. _____, *J. Biol. Chem.* **268**, 1 (1993).
3. W. C. Burhans and J. A. Huberman, *Science* **263**, 639 (1994).
4. J. L. Hamlin, P. J. Mosca, V. V. Levenson, *Biochim. Biophys. Acta* **1198**, 85 (1994).
5. D. Coverly and R. A. Laskey, *Annu. Rev. Biochem.* **63**, 745 (1994).
6. Intact nuclei are defined by the exclusion of large fluorescently labeled molecules that lack a nuclear localization signal (Fig. 1). Damaged nuclei are permeable to such molecules.
7. D. M. Gilbert, H. Miyazawa, M. L. DePamphilis, *Mol. Cell. Biol.* **15**, 2942 (1995).
8. J. F. X. Diffley *et al.* *Cell* **78**, 303 (1994).
9. CHO 400 is a CHO cell line that contains ~1000 tandemly integrated copies of a 243-kb segment of DNA harboring the DHFR gene, the 2BE2121 gene, and a 55-kb intergenic region that were amplified by stepwise selection in methotrexate (4). The pattern of initiation of replication within the amplified locus is indistinguishable from that within the wild-type DHFR locus (10).
10. P. A. Dijkwel and J. L. Hamlin, *Mol. Cell. Biol.* **15**, 3023 (1995).
11. M. A. Madine, C.-Y. Khoo, A. D. Mills, R. A. Laskey, *Nature* **375**, 421 (1995); J. P. J. Chong, H. M. Mahbuhani, C.-Y. Khoo, J. J. Blow, *ibid.*, p. 418; Y. Kubota, S. Mimura, S.-I. Nishimoto, H. Takisawa, H. Nojima, *Cell* **81**, 601 (1995); M. A. Madine, C.-Y. Khoo, A. D. Mills, C. Musahl, R. A. Laskey, *Curr. Biol.* **5**, 1270 (1995).
12. G. H. Leno *et al.* *Cell* **69**, 151 (1992).
13. A. B. Pardee, *Science* **246**, 603 (1989).
14. Cells were permeabilized with digitonin and 2.5×10^6 nuclei per milliliter were stained with DAPI (1 μ g/ml) and affinity-purified. Texas red-labeled IgG (150 μ g/ml) (Jackson Laboratory). Photographs were taken with a Nikon Labophot-2 fitted with a 100 \times Plan lens (numerical aperture, 1.25) and were composed with Photoshop software.
15. Total DNA synthesis was determined by acid precipitation after incubation in extracts containing [α - 32 P]deoxyadenosine 5'-triphosphate (25 μ Ci/ml). 6-DMAP was added to 3 mM. The percentage of labeled nuclei was determined by indirect immunofluorescence after incubation in extracts containing 250 μ M bromodeoxyuridine triphosphate. Similar results were obtained in four separate experiments, although the length of the lag period (10 to 30 min) and the total amount of DNA replicated varied with the batch of extract.
16. We thank B. Knox, D. Dimitrova, M. DePamphilis, J. Huberman, and B. Burhans for critical reading of the manuscript and G. Wahl and G. Leno for helpful advice. Supported by grants to D.M.G. from the Hendricks Foundation, the Milheim Foundation, and the National Science Foundation (MCB-9505907).

13 October 1995; accepted 22 January 1996